



High Speed Tubular Centrifuge



Yocell Biotechnology (Qingdao) Co., LTD

add.: No. 11 ZaoYuan Road, 266121, Qingdao,China

Tel.: +86 532 87890010

Email: info@yocellbio.com

Web: www.yocellbio.com

Round Type Tubular Centrifuge

With round box structure, high separation factor and large diameter drum. Provide reliable process solutions and optimal solid-liquid separation technology.

Applications:

- Biomedical science
- Health products
- Food and beverage
- Chemical industry
- Nanotechnology

Features:

- Auto-control
- Continuous operation
- Operation safety
- Compact size
- Save manpower

YC-GQ76



YC-GQ76 is a kind of small tubular centrifuge for schools, laboratories, scientific research institutes and other industries.

- Suitable for solid-liquid separation with low concentration, small particle size, high viscosity and small ratio between two kinds of media.
- The box is made of stainless steel, and contact material is 316L stainless steel.

YC-GQ76PLC

YC-GQ76PLC plate mobile high speed tubular centrifuge is based on YC-GQ76.

- Adding a mobile platform, human-computer interaction system, frequency converter and remote monitoring module and other configurations.
- Easy to install, simple to use, complete in data collection.





YC-GQ105

YC-GQ105 is solid-liquid separation type of round box high speed tubular centrifuge.

- Suitable for solid-liquid separation with low concentration, fine particles and slight weight difference between two phases.
- The box is made of stainless steel, and contact material is 316L stainless steel.



YC-GQ150

YC-GQ150 is mainly used to separate all kinds of industrial suspensions which are difficult to separate.

- Suitable for solid-liquid separation with thin concentration, fine particles and slight weight difference between two phases.
- The main features are high separation factor, the largest diameter of the drum and high-speed transmission parts with safety cover.
- The contact material is 316L stainless steel.

YC-GF105

YC-GF105 is liquid-liquid-solid three-phaseseparation type of round box high speed tubular centrifuge.

- Suitable for various emulsion separation and liquid- liquid-solid separation with a small amount of impurities.
- The box is made of stainless steel, and contact material is 316L stainless steel.



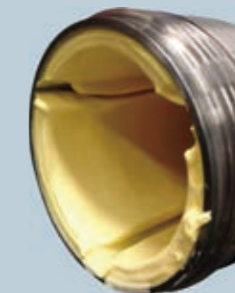
Separation Effect Display



Concentrate

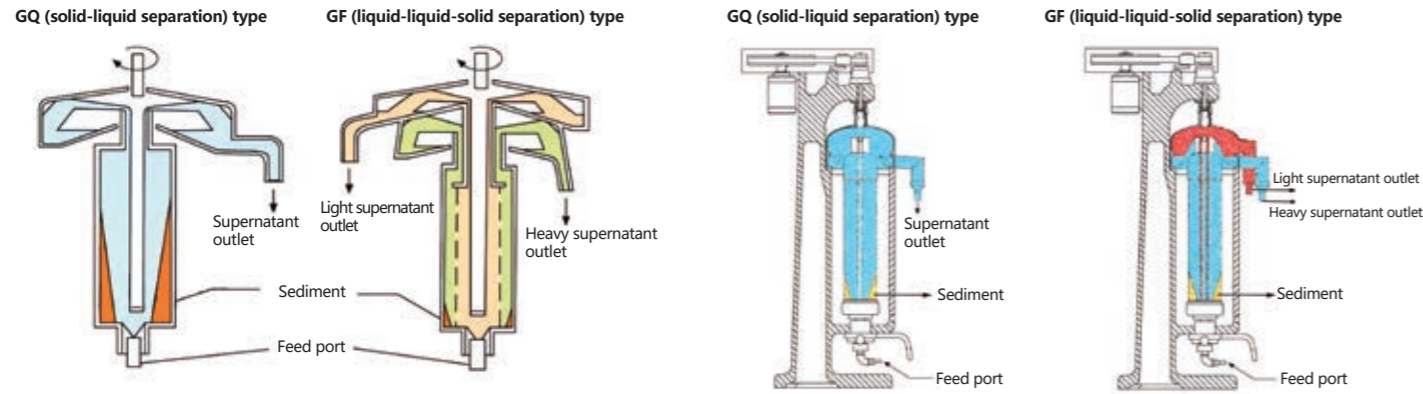


Clear liquid



The separated solid sediment

Working Principle Diagram



Technical parameters

Model	YC-GQ76	YC-GQ76PLC	YC-GQ105/YC-GF105	YC-GQ150
Structure type	Round box floor type	Round box floor type	Round box floor type; plate mobile type	Round box floor type
Centrifugal force	17,008×g	17,008×g	15,040×g	15,572×g
Rotating speed	20000r/min	20000r/min	16000r/min	14000r/min
Volume of drum	2L	2L	6L	11L
Throughput	50~200L/h	50~200L/h	80~600L/h	100~1000L/h
Water supply capacity	500L/h	500L/h	1500L/h	3000L/h
Effective length of drum	490mm	490mm	730mm	820mm
Inner diameter of drum	76mm	76mm	105mm	142mm
Outlet diameter	Φ38mm	Φ38mm	Φ38mm	Φ38mm
Inlet diameter	Φ10mm	Φ10mm	Φ10mm	Φ10mm
Power	1.5kW, 380V/50Hz	1.5kW, 380V/50Hz	3kW, 380V/50Hz	3kW, 380V/50Hz
Weight	180kg	180kg	550kg	650kg
Dimensions	650×380×1150mm	650×380×1150mm	800×450×1620mm	910×510×1660mm

Square Type Tubular Centrifuge

With square box clean structure, high separation factor and large diameter drum. Provide reliable process solutions and optimal solid-liquid separation technology.

Applications:

- Bio-pharmaceutical
- Chemical industry
- Food processing
- Biological product
- Sewage treatment

Features:

- Auto-control
- Continuous operation
- Operation safety
- Save manpower
- Excellent cooling effect



■ Square Type Tubular Centrifuge



YC-GQ105G / YC-GQ142G

YC-GQ105G / YC-GQ142G high speed tubular centrifuge has open-door square box structure.

- Easy to open and disassemble.
- The box is made of stainless steel, and contact material is 316L stainless steel.
- Equipped with a large area of cooling pipe with excellent cooling effect.

YC-GQ142GOS

YC-GQ142GOS is an overspeed tubular centrifuge based on YC-GQ142G.

- The rotating speed can reach 17000rpm, and centrifugal force is as high as 23000×g.
- The noise is below 75 dB, and the operation is stable.
- The contact material is 316L stainless steel.
- Equipped with high-density cooling coil for better cooling effect.



Technical parameters

Model	YC-GQ105G	YC-GQ142G	YC-GQ142GOS
Structure type	Square box type; front door floor type	Square box type; front door floor type	Square box type; front door floor type
Centrifugal force	15,040×g	15,572×g	23,000×g
Rotating speed	16000r/min	14000r/min	17000r/min
Volume of drum	6L	11L	11L
Throughput	80~600L/h	100~1000L/h	100~1000L/h
Water supply capacity	1500L/h	3000L/h	3000L/h
Effective length of drum	730mm	820mm	820mm
Inner diameter of drum	105mm	142mm	142mm
Outlet diameter	Φ38mm	Φ38mm	Φ38mm
Inlet diameter	Φ10mm	Φ10mm	Φ10mm
Power	3kW, 380V/50Hz	3kW, 380V/50Hz	3kW, 380V/50Hz
Weight	750kg	950kg	950kg
Dimensions	850×470×1690mm	910×620×1770mm	910×620×1770mm

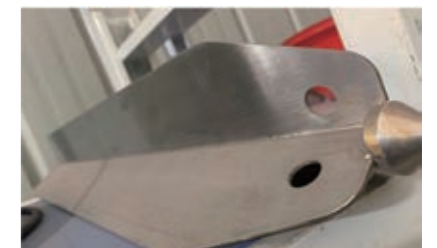
Equipment Details



The equipment box body is welded with Q235 high-quality carbon steel, and the stress is eliminated through multiple heat treatments.



As the core component of the centrifuge, the drum determines the quality of the equipment. The Brinell hardness of the rotor can reach above 170.



The connecting part of the three-edge plate is welding process with high strength, which can keep the rotor balance well. Without gaps, and easy to clean.