



Separation and purification solutions for preparative chromatography



Yocell Biotechnology(Qingdao)Co.,LTD
1215-5,No.176 Jufeng Road,266199,Qingdao,China
Tel:0086-532-80920900
Email: info@yocellbio.com
Web:www.yocellbio.com

Yocell Preparation Platform

The characteristic design is more convenient to use.



Drawer-style module structure

Effortless replacement, without any need of specialized personnel or delicate tools.



In-line peristaltic pump for column purge

Detector module incorporates a delicate peristaltic pump, which facilitates the removal of air bubbles from the pump head and enables quick evacuation of residual liquid in Flash columns after separation.



Smart and reliable column rack

Exquisite and innovative column rack that accommodates of up to three tandem Flash columns in various sizes. Effortlessly connect multiple 330g large-scale chromatography columns.



Meticulously designed bulk collection valve

An dedicated in-line rotary valve in detector achieves a unique bulk collection function, which offers a standalone port for large-scale eluents. The valve also blocks flow path to block syphon when system is idle.

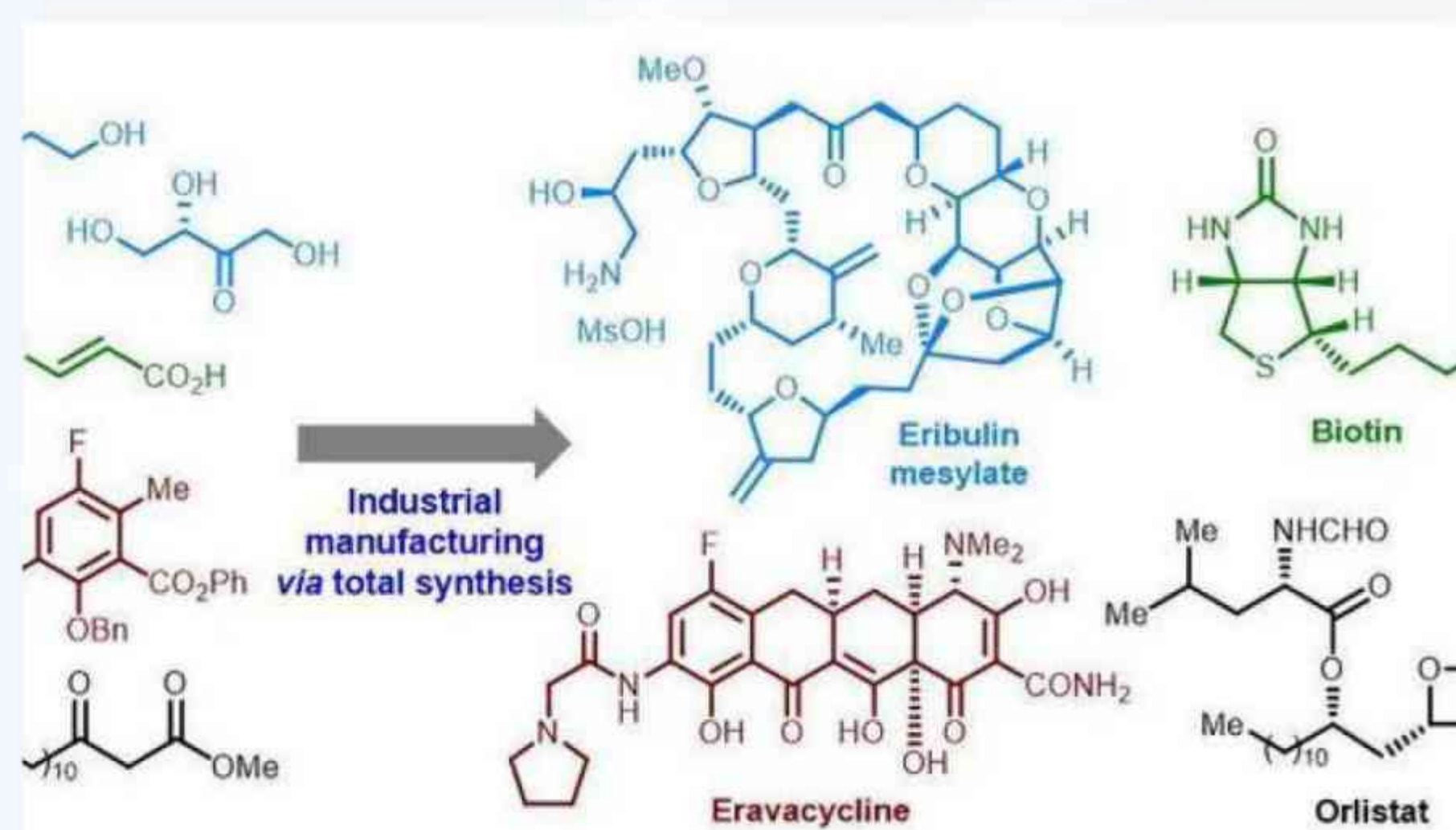
Application



Separation and purification of natural products



Separation and purification of synthesized drugs



Preparation of intermediates or by-products of synthetic reactions



Separation and purification of chiral drugs

Technical Features

- Easy to move, transport and install with integrated design and small covered area.
- Flexible configuration for various requires.
- Compatible with forward and reverse chromatography.
- A locking valve prevents siphoning by automatically blocking the flow path when the instrument is stopped.
- Large volume collection valves facilitate the collection of large amounts of fluid fractions.

Technical Parameters

Model	YCIPC-HP-DDP50	YCIPC-HP-DDP100
System Type	High pressure semi- preparation	High pressure preparation
Pump Configuration	Dual-piston×2	Dual-piston×2
Flow Rate	0.1-50mL/min	1-100mL/min
Flow Rate Accuracy	±1.00%	±1.00%
Flow Rate Stability (RSD)	≤0.30%	≤0.30%
Pressure Limit	30MPa (4300Psi)	21MPa (3000Psi) @100mL/min 24MPa (3500Psi) @40mL/min
Gradient Accuracy	±1.00%	±1.00%
Gradient Precision	±0.15%	±0.15%
Applicable HPLC Column (Inner diameter)	9.4 mm-50 mm	9.4 mm-50 mm
Gradients	Two-solvent binary gradient/Four-solvent binary gradient	

Injection Modes	Standard configuration: R7725i manual sampling valve; Optional configuration: Automatic sampling valve (1,5,13 channels), Carousel autosampler(30mL*24 position/10 mL * 30 position), Sample pump
Detector	190-650nm dual-channel variable wavelength UV detector 190-800nm dual-channel variable wavelength UV/Vis detector 200-400nm DAD detector 200-800nm DAD detector
Collection Modes	Large capacity collection valve + automatic collector (20 ml * 140 positions/50ml * 60 positions/250 ml * 16 positions)
Dimensions	42cm*55cm*52cm

Optional Configurations

Automatic sampling module-Facilitating high-throughput preparations



Automatic sampling valve

- 1/5/13-channel valved sampler can be used with different sizes of dosing rings.
- With a flushing channel to prevent cross-contamination between samples.
- Used for multiple injections of a small number of samples, commonly used by users of scale preparation.



Carousel autosampler

- Carousel autosampler designed for sequential injection of multiple samples.
- 30ml* 24-position or 10mL* 30-position specification is optional.
- With a flushing channel to prevent cross-contamination between samples.



Sample pump

- The sample pump has different specifications such as 10, 50, 100ml/min to meet the different needs of customers

Auxiliary function modules-Bring convenience to the application



Solvent Selector Valve

The solvent selector valve upgrades a two-solvent binary gradient to a four-solvent binary gradient system with an exclusive binary mixed waste recovery function, which reduces solvent consumption by using approximately half the volume of mixed waste instead of pure solvent, and is suitable for both isocratic and gradient elution.

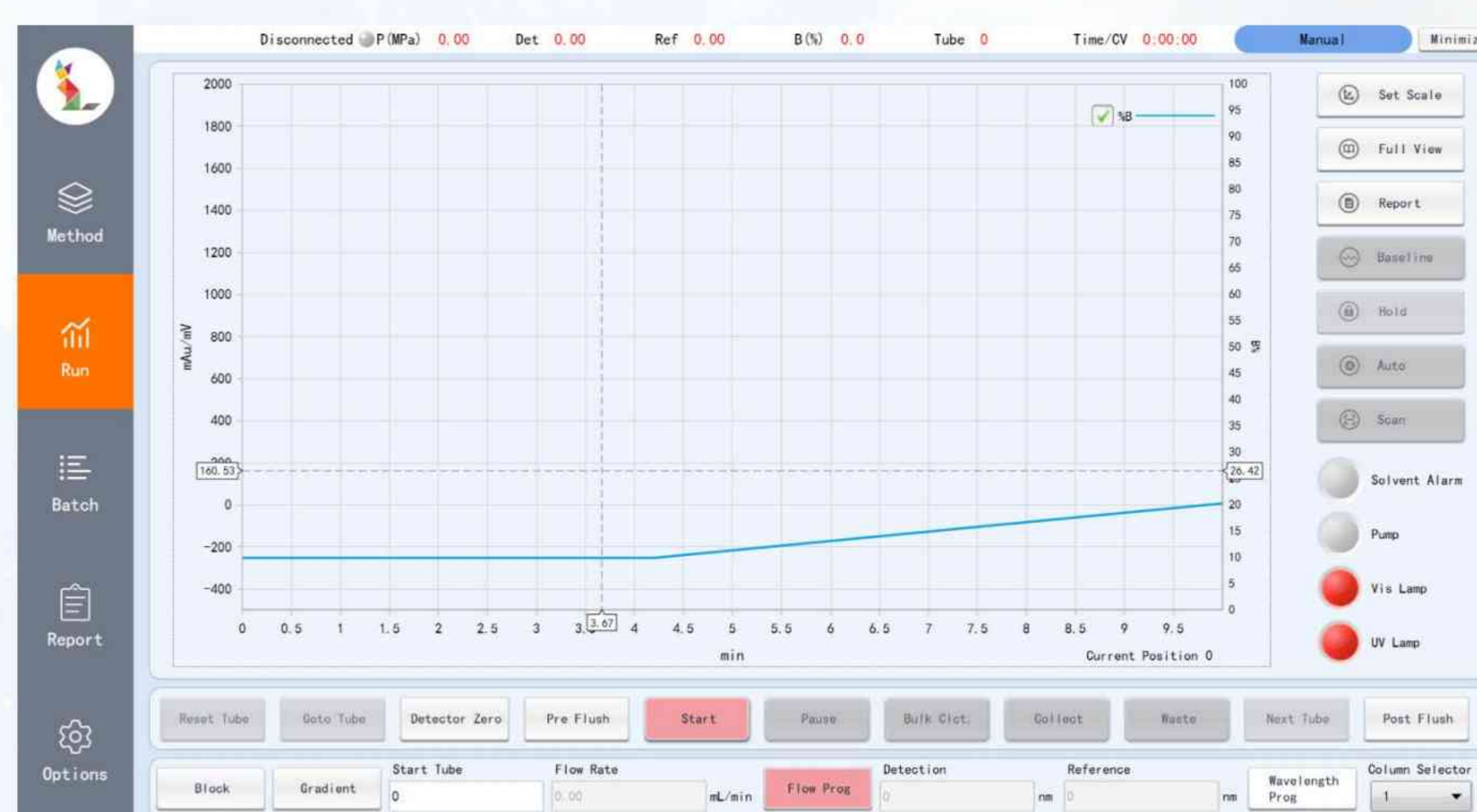
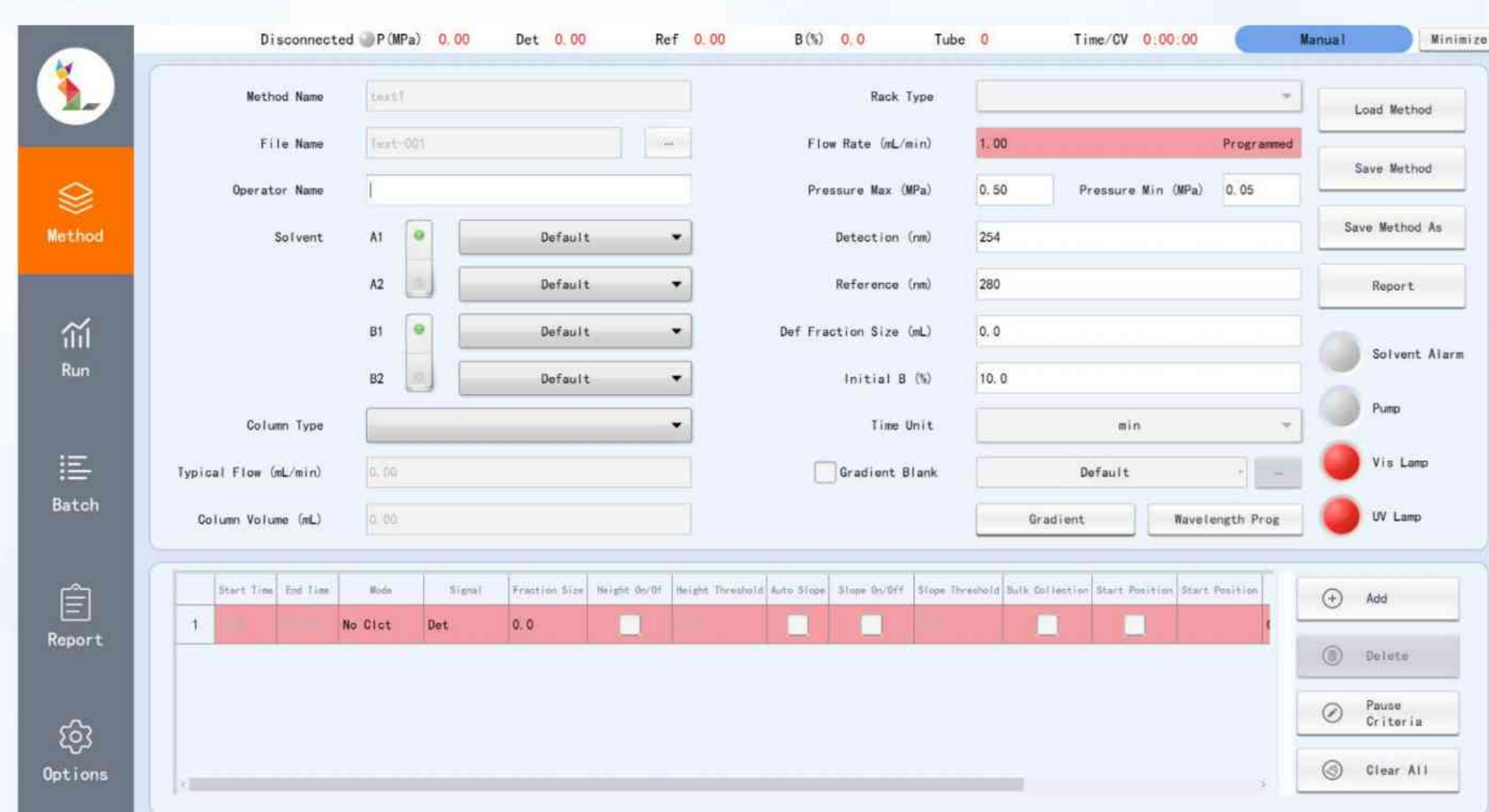


Preparation column oven

It is specially designed for preparative liquid chromatography with built-in preheat exchanger. It can effectively preheat the mobile phase to the temperature setting, avoiding the common temperature gradient along the preparative chromatography column, suitable for the flow rate range of 5-50 ml/min, temperature control range up to 65 °C, providing a stable and consistent separation temperature environment for a variety of preparative chromatography columns with an internal diameter of 9.4-30 mm.

Tangram workstation-Uitimate swiftness and smoothness

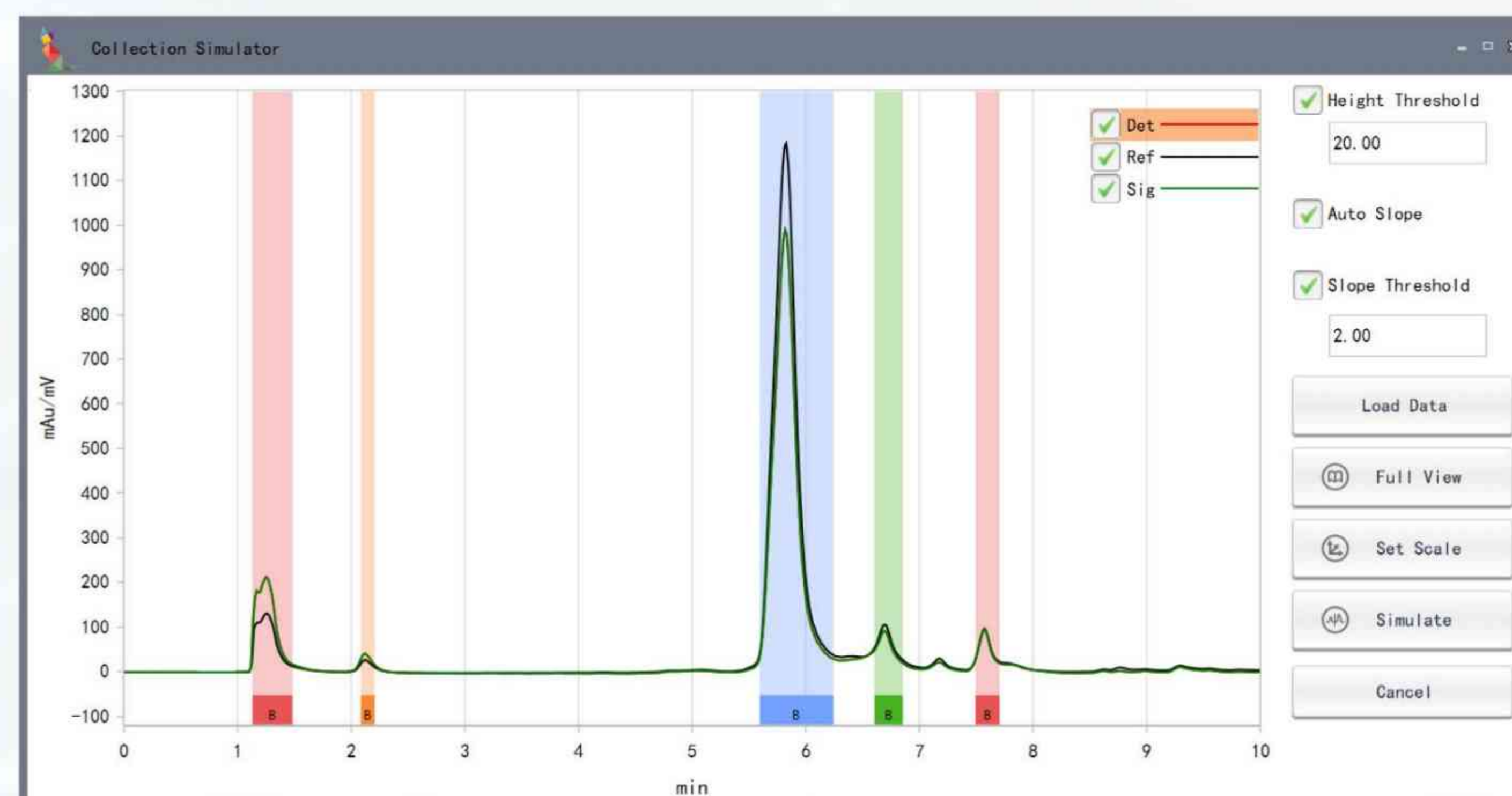
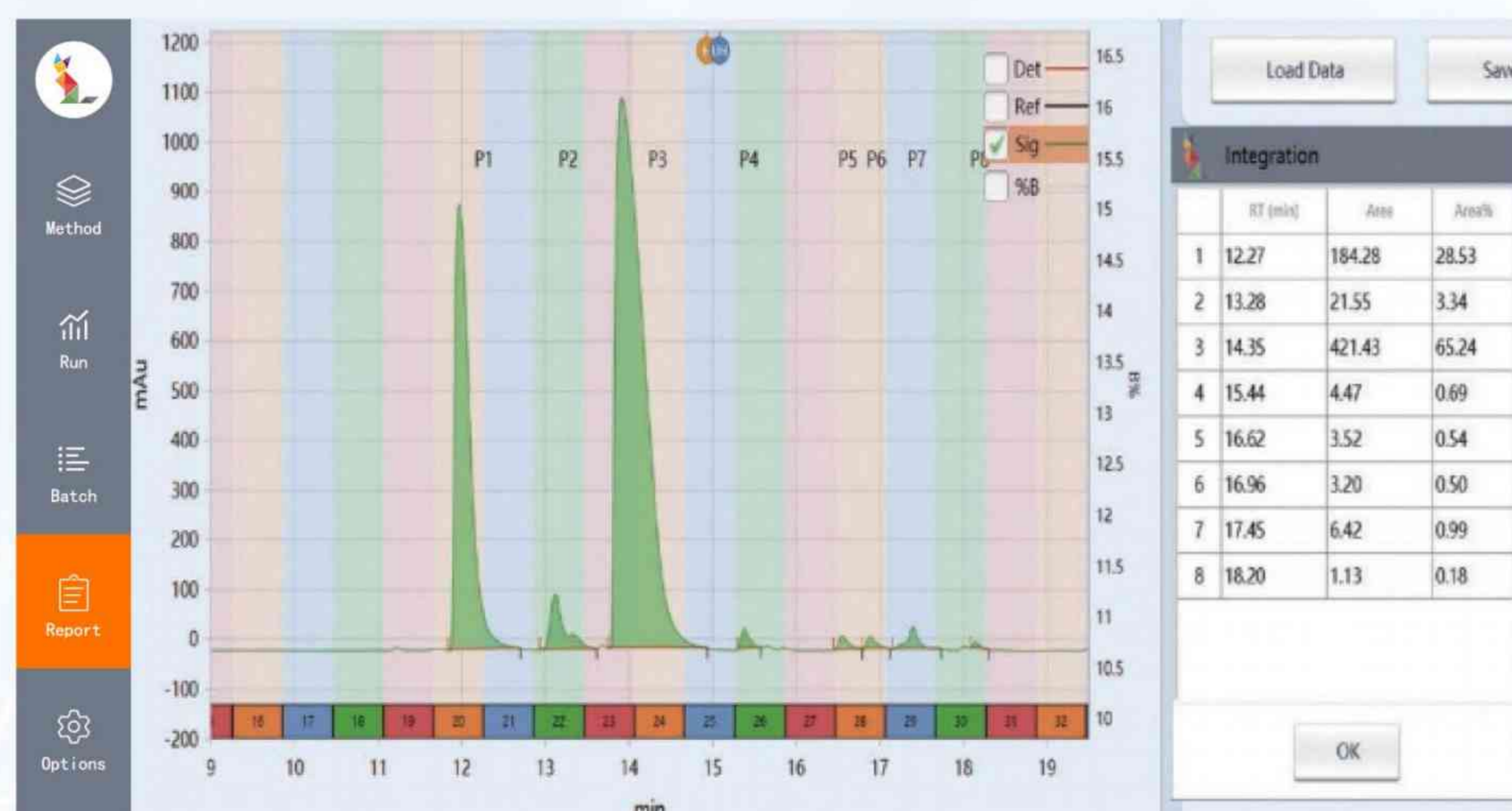
Flat designed User interface-Two type of user interface switchable in one touch. Simplified UI, concise and practical for typical workflows. Professional UI, feature-rich for advanced application.





Convenient integration and normalization functions

Collection simulation with achieved chromatogram helps method development for auto-collection



For solvent systems with UV absorption, baseline subtraction function ensures a stable baseline for reliable collection.

There is a significant baseline drift in the gradient run without background subtraction.

After subtraction, the baseline significantly improves for a better data acquisition.

